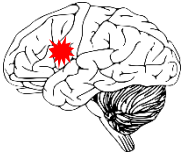


# Young Stroke Service Project

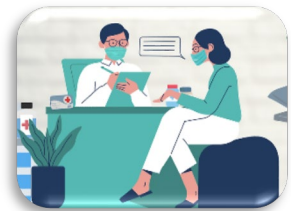
## Consumer Consultant Information



Thank you for your interest in becoming a **consumer consultant** on the **Young Stroke Service project**.

### 1. What is the project?

- The Florey Institute of Neuroscience and Mental Health is building a **new Australian health service for young adults** (age 18- 45) who have stroke.
- Doctors, therapists, and survivors of stroke will all work in the service.
- Treatments will be provided **in-person** and **online**.
- People with stroke who have **difficulty communicating or thinking** will be helped to access the service.





### 2. What are consumer consultants?



- Consumer consultants are **people with lived experience of stroke** who will be involved in the project.
- They can be **people with stroke** or **family members** or **carers**.
- We want to **include people from diverse backgrounds** e.g., cultures, languages, genders, living situations and **people with different experiences** of stroke e.g., **having a recent stroke, difficulty moving, communicating, thinking, or seeing**.



### 3. Types of involvement of consultants in the project

- There are **many ways** for consultants **to be involved** in the project. 
- You can be involved as much or as little as you want.
- We need consultants with **particular skills or experience** (such as use of communication strategies for aphasia, or experience working with the media).
- Other activities **just need consultants who have been in hospital.** 

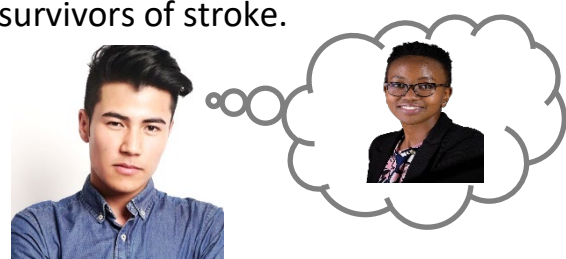
#### Involvement can range from:

<b>Consultation:</b>	<b>Involvement:</b>	<b>Partner:</b>
<p>For example: <b>providing feedback</b> on wording of patient surveys or the project website.</p> 	<p>For example: <b>discussion with the project team</b> on how people with stroke use digital technology.</p> 	<p><b>Consultants and project team have equal say in project decisions.</b></p> <p>For example: developing a young stroke education program, writing a publication, lobbying for funding.</p>

Consultants will help us **from their own lived experience perspective.**



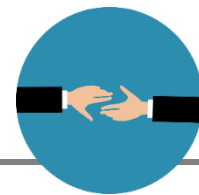
They will also need to think about **different experiences of other survivors of stroke.**



## 4. Support for consultants – How we can help you to be involved

- **Project staff will:**

- **mentor** you to help you complete activities.
- **brief you** before and after meetings.
- give you any **extra support you need**, like help to communicate.
- **guide you to support** if you get distressed thinking about your own stroke experiences.



- **You:**

- can bring a **support person** to meetings held in person or on Zoom.
- will be **compensated for your time** with a **digital Visa gift card** or via **invoice** if you have an Australian Business Number (ABN).
- will have parking and transport costs **reimbursed**.



## 5. Responsibilities – what you will do?

- **Project team members and consultants are expected to:**

- Share clear, open, and respectful **communication** about project activities.
- **Attend meetings and meet deadlines** as agreed and tell us if you cannot come or make the deadline.
- Maintain **confidentiality** of discussions.
- Avoid using technical and medical language. **Please let us know if you do not understand anything!**
- **Raise any concerns** with the project team. You'll get their details when you become a consultant.
- Complete **online training** called *“Working well with stroke researchers.”*

### Training

Consumers will complete **online training** called: *“Working well with stroke researchers.”*

- The training is **free**
- Takes about **30 minutes** to complete
- **We can help** if you have communication difficulties.

Click on the link for the training



<https://enableme.s3.ap-southeast-2.amazonaws.com/Research/story.html>



More information - email [strokeconnect@strokefoundation.org.au](mailto:strokeconnect@strokefoundation.org.au)